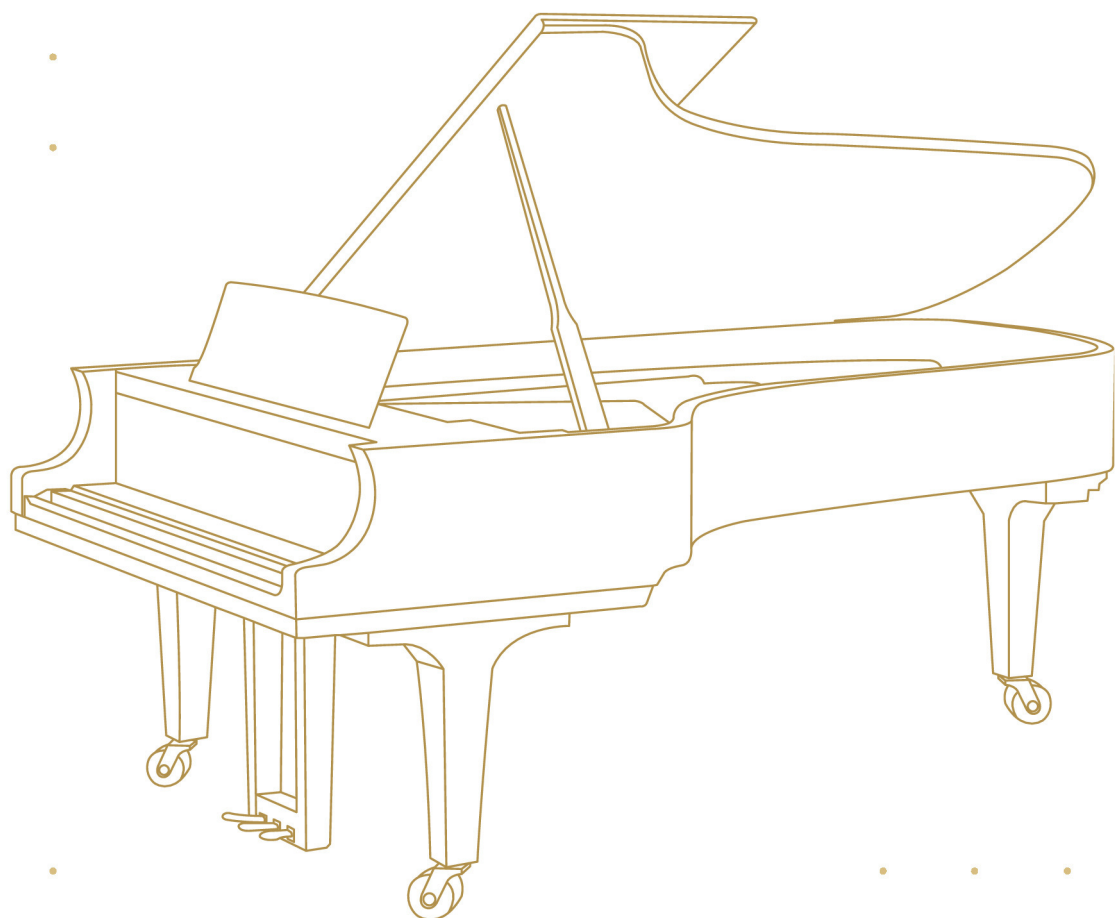


Georg Friedrich Händel

SUITE NR. 4

D-MOLL HWV 437



FÜR KLAVIER

Suite Nr. 4 d-Moll HWV 437

Allemande · Courante · Sarabande · Gigue

MUSIK	Georg Friedrich Händel
GENRE	Klassik, Barockmusik
BESETZUNG	Klavier

Diese Ausgabe ist ausschließlich für den persönlichen Gebrauch bestimmt. Das Kopieren, Vervielfältigen oder Weitergeben ohne Genehmigung ist gesetzlich verboten und kann rechtliche Konsequenzen nach sich ziehen.

Erstellung und Vertrieb
Soundnotation als Teil der Sonovative GmbH
Hamburger Str. 180
22083 Hamburg
Deutschland
www.soundnotation.com

Alle Rechte vorbehalten
© 2026 Classicato

Inhaltsverzeichnis

Suite Nr. 4 d-Moll HWV 437

Allemande	4
Courante	6
Sarabande	8
Gigue	10

Allemande

Musik: Georg Friedrich Händel

The first system of the Allemande, measures 1-2. The music is in G minor (one flat) and common time (C). The treble clef staff features a melodic line with eighth-note patterns and a trill-like figure. The bass clef staff provides a simple harmonic accompaniment with quarter notes and rests.

The second system of the Allemande, measures 3-4. Measure 3 begins with a triplet of eighth notes in the treble clef. The bass clef continues with a steady quarter-note accompaniment. Measure 4 concludes with a final chord in the treble clef.

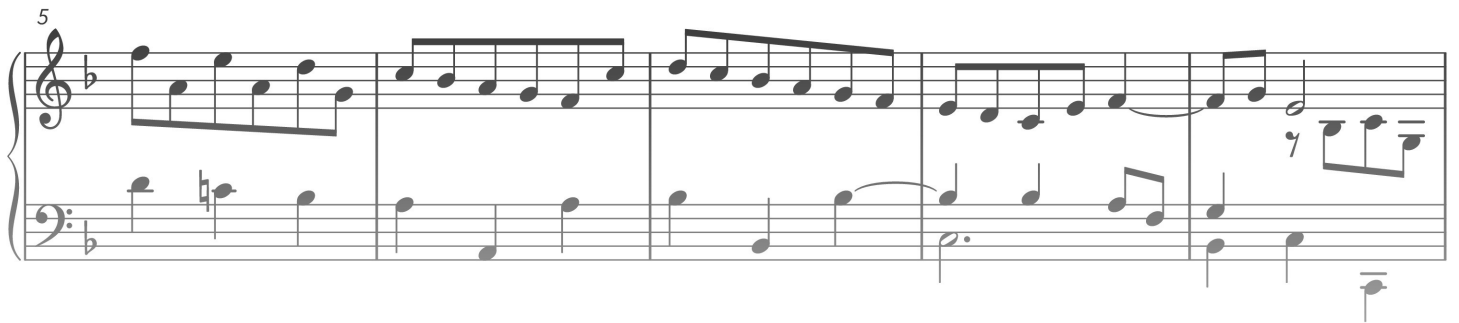
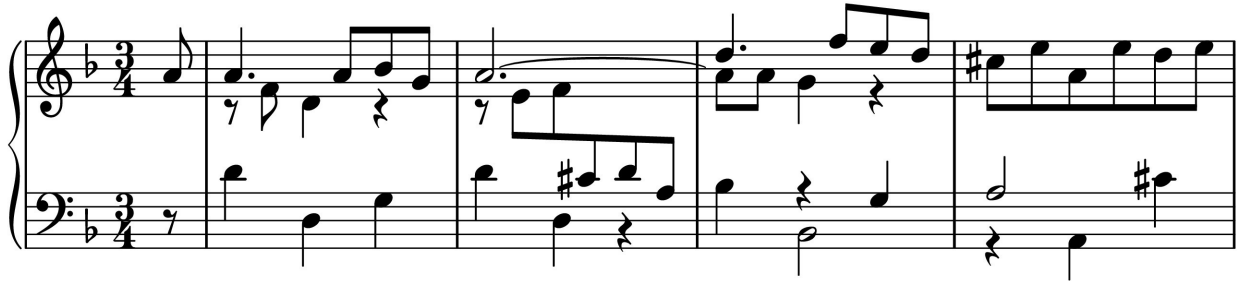
The third system of the Allemande, measures 5-6. Measure 5 starts with a triplet of eighth notes in the treble clef. The bass clef continues with a steady quarter-note accompaniment. Measure 6 concludes with a final chord in the treble clef.

PREVIEW

 soundnotation

Courante

Musik: Georg Friedrich Händel



PREVIEW

 soundnotation

Sarabande

Musik: Georg Friedrich Händel

The first system of the Sarabande, measures 1-4. The music is in G minor (one flat) and 3/4 time. The right hand features a series of chords and single notes, while the left hand plays a simple bass line.

The second system of the Sarabande, measures 5-10. The right hand continues with chords and single notes, and the left hand plays a simple bass line.

The third system of the Sarabande, measures 11-16. The right hand continues with chords and single notes, and the left hand plays a simple bass line. The system ends with a double bar line and repeat dots.

17 Variatio 1

PREVIEW

 soundnotation

Gigue

Musik: Georg Friedrich Händel

The first system of the Gigue consists of two staves. The top staff is in treble clef and the bottom staff is in bass clef. The time signature is 12/16. The key signature has one flat (B-flat). The music features a rhythmic pattern of eighth and sixteenth notes with rests, and a repeat sign at the end of the second measure.

The second system of the Gigue consists of two staves. The top staff is in treble clef and the bottom staff is in bass clef. The time signature is 12/16. The key signature has one flat (B-flat). The music features a rhythmic pattern of eighth and sixteenth notes with rests, and a repeat sign at the end of the second measure.

The third system of the Gigue consists of two staves. The top staff is in treble clef and the bottom staff is in bass clef. The time signature is 12/16. The key signature has one flat (B-flat). The music features a rhythmic pattern of eighth and sixteenth notes with rests, and a repeat sign at the end of the second measure.

PREVIEW

 soundnotation