

ACT Publishing

NILS LANDGREN'S **CHRISTMAS SONGBOOK**



Nils Landgren's Christmas Songbook

INTERPRETATION	Nils Landgren
MUSIC	Georg Friedrich Händel, Traditional, Johann Sebastian Bach, Gustaf Nordqvist, Eva Kruse-Liljeqvist, Peter Liljeqvist, Nils Landgren, Ludwig van Beethoven, Eva Kruse, Johan Norberg
TEXT	Friedrich Heinrich Ranke, Bernhard Severin Ingemann, Paul Gerhardt, Edvard Evers, Eva Kruse-Liljeqvist, Peter Liljeqvist, Eva Kruse
ARRANGEMENT	Ida Sand, Jeanette Köhn, Jessica Pilnäs, Johan Norberg, Jonas Knutsson, Sharon Dyall, Nils Landgren, Eva Kruse, Jessica Piläs
GENRE	Holiday, Christmas jazz
INSTRUMENTATION	Lead sheet; voice and piano; piano, Vocals, Guitar

This edition is intended exclusively for personal use. Copying, reproducing, or distributing without permission is prohibited by law and may result in legal consequences.

Creation and distribution
Soundnotation as part of Sonovative GmbH
Hamburger Str. 180
22083 Hamburg
Germany
www.soundnotation.com

All rights reserved
© 2025 by ACT Music Publishing e.K.

Table of Contents

Tochter Zion	4
Härlig Är Jorden	6
Wie soll ich dich empfangen	7
Jul Jul, Strålande Jul	8
Christmas Is	13
Dagen är kommen	18
Joy to the World	24
Let the Stars Come out Tonight	30
Ding Dong Merrily On High	34
Christmas Is Here	42

Tochter Zion

Music: Georg Friedrich Händel

Text: Friedrich Heinrich Ranke

♩ = 85
F⁵/C

Verse

Dot - ter Si - on, fröj - da dig,

8
Ju - bla högt, Je - ru - sa - lem!

Faster ♩ = 110

14 F

Bass solo Trumpet Bass Trumpet

2 9 2 4 2

34 C

3 F C

Dot - ter Si - on, fröj - da dig,

PREVIEW

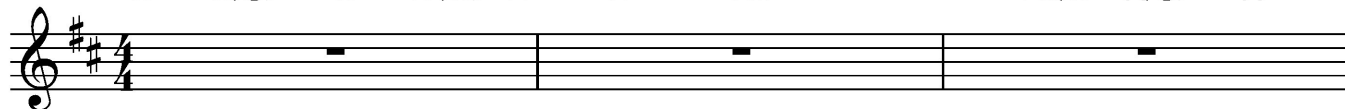
 soundnotation

Härlig Är Jordan

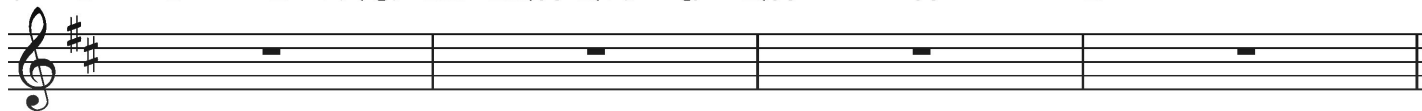
Music: Traditional
Text: Bernhard Severin Ingemann

♩ = 85

D D/C# B B7/D# E(sus4) E(sus2) Em Em/D A/C# A7



4 D(sus4) D(sus2) D F#7/C# Bm Bm/A D/F# G D/A A7 D



8 D Bm Bm/A G⁶ A D D F#7/C# Bm D7/A G A D



1. Här - lig är jor - den, här - lig är Guds him - mel,
2. Ti - de - varv kom - ma, ti - de - varv förs - vin - na,
3. Än - glar den sjön - go först för mar - kens her - dar.

12 D/F# G D/F# Em D/F# G G#7 A(sus4) A



skön är____ sjä - lar - nas pil - grims - gång.
släk - ten____ föl - ja____ släk - tens - gång.
Skönt från____ själ - till____ själ - tens - ljud:

PREVIEW

 soundnotation

Wie soll ich dich empfangen

Music: Johann Sebastian Bach

Text: Paul Gerhardt

Slowly ♩ = 60

A7(SUS4) E F G F/AB°C F⁶ E



Wie soll ich dich em - pfan - gen, und

6 Am F Dm⁶ E Am A7(SUS4) E F G F/AB°C



wie be - gegn'__ ich dir? O al - ler Welt Ver -

10 F⁶ E Am F Dm⁶ E Am A7(SUS4) Am⁷



lan - gen, O mei - ner See - len Zier! O

15 Dm⁶ Em F B°/D F/AC F A^{o7}/C# Dm A A7(SUS4) D/F#



Je - su, Je - su, set - ze mir selbst die Fa - ckel bei, da -

PREVIEW



Jul Jul, Strålande Jul

Music: Gustaf Nordqvist

Text: Edvard Evers

Moderately ♩ = 100

Intro D Gm⁶/D D Gm⁶/D D D/F# G

Voice

Piano

mp

7 A(SUS⁴) A D Gm⁶ D Gm⁶ **Verse** D Gm⁶/D

Jul, jul,

p

The image shows a musical score for the song 'Jul Jul, Strålande Jul'. It features a voice line and a piano accompaniment. The key signature is D major (two sharps) and the time signature is 3/4. The tempo is marked 'Moderately' with a quarter note equal to 100 beats per minute. The score is divided into an 'Intro' and a 'Verse'. The Intro consists of six measures with chords D, Gm6/D, D, Gm6/D, D, and D/F# G. The Verse begins at measure 7 with chords A(SUS4), A, D, Gm6, D, Gm6, and D, Gm6/D. The piano part includes dynamics like *mp* and *p*. The lyrics 'Jul, jul,' are written under the piano part in the verse section.

PREVIEW

 soundnotation

21 A/G G A/G Em F#/E Em F#(sus4) F#

kro - nor med gnis - tran - de ljus glim - man - de bå - gar i al - la Guds hus,

28 Bm D/F# F#m/A G Em Bm G⁶

psalm, som är sjun - gen från tid till tid, e - vi - ga läng - tan till ljus och

35 F# D Gm⁶/D D Gm⁶/D D

frid! Jul, jul, strå - lan - de jul, glans ö - ver

PREVIEW

Christmas Is

Music: Eva Kruse-Liljeqvist, Peter Liljeqvist

Text: Eva Kruse-Liljeqvist, Peter Liljeqvist

Tenderly ♩. = 60

Intro B \flat Cm 7

Voice

Piano *mp*

Verse

5 B \flat E \flat B \flat F/A Gm 7

1. Now is the time we've all been a - wait - ing. A light in the sky

PREVIEW



14 Gm/F Eb Bb/D Cm⁹

for the new year a - com - ing, for peace in the world_

mf

18 F Chorus Eb/Bb F/Bb Bb

and for all we hold dear. Christ-mas is like no oth-er ho-li-day, where

mf

23 Eb/Bb F/Bb Bb F/Bb Gm⁷ Eb(add9) F Dm⁷ Gm⁷

love and laugh-ter is found. Christ-mas is like no oth-er ho - li - day, let's

PREVIEW

Dagen är kommen

Music: Nils Landgren

$\text{♩} = 100$

F Gm7/F F Gm7/F

Voice

Piano

5 F Gm7/F C7/F F C/E F B \flat F/C C

PREVIEW

 soundnotation

9

Dm C/G G C G/D C/E F C/G G⁷ C

Kom - låt oss skyn - da till Be - thle hem.
Män - nis - ko - son - av Ma - ri - a född.

13

F/A Gm F Gm C⁷ F Gm/B^b G⁷/B C G⁷/D C

Hä - lsad av än - glar Krist are född till jor - den O
Så Gud sin kär - lek för att värl - den vi - sar

17

F C⁷ F Gm⁷/B^b F F C F Gm⁷/B^b F/C C D⁷ Gm⁷ F/C Gm G⁷


PREVIEW


Joy to the World


Music: Ludwig van Beethoven


♩ = 106


Acoustic Guitar



















Joy to the world _____ the Lord is come Let


♩ = 106


Piano

7









Earth re-ceive her King *gva*-----]

PREVIEW



24

Let eve - ry_ heart_ pre - pare him_ room_ and hea - ven and na - ture sing and



31

hea - ven and na - ture sing, and hea - ven and hea - ven and na - ture sing



38

Joy to the world the Sa - vior reigns let men their songs em -

PREVIEW

Let the Stars Come out Tonight

Music: Peter Liljeqvist, Eva Kruse

Text: Eva Kruse, Peter Liljeqvist

Acoustic Guitar
Vocal

♩ = 70

E⁵ A(add9) B(sus4) E A(add9)

1. What if she came a-lone o-ver the seas of
2. What if I came a-lone o-ver the seas of

Piano
Piano

4 B B(sus4) E A(add9) B(sus4)

sor-row sor-row what if the night would fall
sor-row what if the night would fall

PREVIEW

 soundnotation

9

love there is hope e-ven in the eye of the

12

storm Christ-mas Eve si-lent night let the

C6 1. D 2. D E5 A6

PREVIEW

Ding Dong Merrily On High

Music: Traditional

♩ = 96

E \flat 5 **G \flat m7/E \flat** **B \flat m/E** **G \flat m7/E \flat** **B \flat m7/E \flat** **G \flat m7/E** **E \flat 5** **G \flat m7/E \flat** **B \flat m/E**

Vocal

Piano

r.h. *l.h.*

The image shows a musical score for the song 'Ding Dong Merrily On High'. At the top, there are guitar chord diagrams for the following chords: E \flat 5, G \flat m7/E \flat , B \flat m/E, G \flat m7/E \flat , B \flat m7/E \flat , G \flat m7/E, E \flat 5, G \flat m7/E \flat , and B \flat m/E. Below the chords is a vocal line in 3/4 time, which is mostly blank. Underneath the vocal line is a piano accompaniment. The right hand (r.h.) features a melody with triplets and slurs. The left hand (l.h.) provides a bass line with sustained notes and triplets. The tempo is marked as ♩ = 96.

PREVIEW

 soundnotation

9

E_b E_b7 A_b/C E_b^5 $Gbm7/E_b$ Bbm/E

Ding dong mer-ri-ly on high, in hea-ven bells are rin - ging

13

$Bbm7/E_b$ $Gbm7/E_b$ E_b E_b7 A_b/C

— Ding dong! Ve-ri-ly the sky is riv'n with an - gel

PREVIEW

Christmas Is Here

Music: Nils Landgren, Johan Norberg

$\text{♩} = 90$

E_b $E_b(\text{sus}4)$ E_b $E_b(\text{sus}4)$

Voice

Piano

PREVIEW



8

E_b E_b $E_b(\text{sus}4)$ B_b7

star I fol-low the rain - bow To be where you

12

E_b B_b7 E_b $E_b(\text{sus}4)$

are I'll go where the wind blow

15

B_b $Cm7$ B_b/D E_b B_b/D $Cm7$ E_b/B_b

When-e-ver we may roam As long as our

PREVIEW